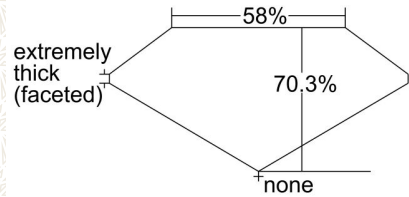


GIA COLORED DIAMOND REPORT

April 15, 2015
 Report Type Grading Report
 GIA Report Number 7181915442
 Shape and Cutting Style Modified Square Brilliant
 Measurements 7.84 x 7.80 x 5.48 mm

Carat Weight 3.02 carat
 Color Grade Fancy Green
 Color Origin Natural
 Color Distribution Even
 Clarity Grade SI1
 Proportions:



Profile not to actual proportions

Polish Very Good
 Symmetry Good
 Fluorescence Faint
 Inscription(s): GIA 7181915442

Comments: Pinpoints are not shown.

ADDITIONAL INFORMATION

GIA COLORED DIAMOND SCALE

GIA CLARITY SCALE

FLAWLESS
INTERNALLY FLAWLESS
VERY VERY SLIGHTLY INCLUDED VVS ₁
VVS ₂
VERY SLIGHTLY INCLUDED VS ₁
VS ₂
SLIGHTLY INCLUDED SI ₁
SI ₂
INCLUDED I ₁
I ₂
I ₃

Illustration of GIA fancy color grade interrelationships

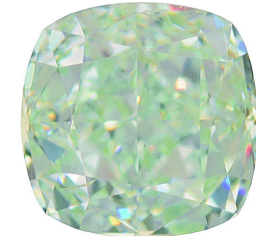
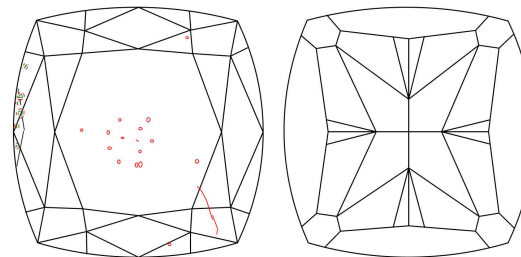


Image is approximate

CLARITY CHARACTERISTICS



KEY TO SYMBOLS*

- Feather
- Crystal
- Needle
- Indented Natural
- Extra Facet

* Red symbols denote internal characteristics (inclusions). Green or black symbols denote external characteristics (blemishes). Diagram is an approximate representation of the diamond, and symbols shown indicate type, position, and approximate size of clarity characteristics. All clarity characteristics may not be shown. Details of finish are not shown.



The results documented in this report refer only to the diamond described, and were obtained using the techniques and equipment used by GIA at the time of examination. This report is not a guarantee or valuation. For additional information and important limitations and disclaimers, please see www.gia.edu/terms or call +1 800 421 7250 or +1 760 603 4500. ©2014 Gemological Institute of America, Inc.

reportcheck.gia.edu



 THE SECURITY FEATURES IN THIS DOCUMENT, INCLUDING THE HOLOGRAM, SECURITY SCREEN AND MICROPRINT LINES, IN ADDITION TO THOSE NOT LISTED, EXCEED DOCUMENT SECURITY INDUSTRY GUIDELINES.